

inside out

Milan Trend Report



Unlocking innovation: trends and insights from Salone Del Mobile 2024

In the ever-evolving landscape of commercial interior design and architecture, staying abreast of the latest trends and innovations is key to success. As the heartbeat of the industry, Salone del Mobile continues to serve as THE ultimate showcase for cutting-edge designs and

forward-thinking concepts. In its 62nd year, this prestigious event once again brought together the brightest minds and the most exciting pieces in contract furniture and hospitality design.

Our team are delighted to share with you not only the very latest in furniture trends, but

also always mindful of clients' needs and budgets, highlighting affordable & sustainable pieces – perfect for every project.

In this trend report, we share our observations to empower you to navigate the ever-changing landscape of your industry with confidence and creativity.



Introduction

01 Colours

- 8 Natural Tones
- 10 Vibrant Jewels
- 12 Earthy Terracotta
- 15 Pastel Palette

02 Materials

- 18 Bold Patterns
- 20 From Nature
- 22 Statement Stone

03 Shapes

- 26 Curvaceous & Cylindrical
- 28 Angular
- 30 Striking Silhouettes



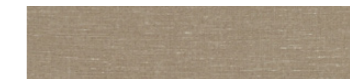
01

Colours

Earthy hues such as warm browns, soft greens, and sandy neutrals remain popular, evoking a sense of tranquillity and connection to nature, in line with the biophilic design trend.



Callie Soft Chair Olympia Sofa & Armchair



Layer Natura



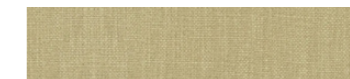
Loiret Natural



Perledo Dove



Marais Raffia Oyster



Tortone Natural



Tullow Natural



Phlox Lounge Chair



Soft Chair



Bjorn Lounge Chair



Zephyr Table

OUR SUSTAINABLE CHOICE

Made from PEFC approved wood, our chair is eco-friendly. PEFC ensures forests are managed responsibly, protecting nature and helping communities. Choosing this chair supports sustainable sourcing, preserving forests for a greener future.

Natural Tones

Colours

Inject energy and sophistication into your space with rich, saturated hues. From emerald green to sapphire blue, ruby red to amethyst purple, each jewel tone adds depth and personality. Explore the Vibrant Jewels palette for timeless elegance and indulgence.



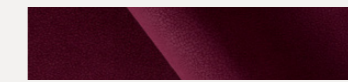
Caementum Table & Buddy Modular Sofa

SUSTAINABLE FABRICS

Embrace sustainability with your fabric choices. This forward-thinking recycled velvet is made from 100% recycled yarns, derived from waste plastics. By using this eco-friendly material, you're not only adding modern style and soft texture to your space but also actively reducing plastic waste for a cleaner planet.



Sangria



Bijou



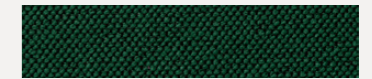
Reggatta



Harvest



Peroni



Reed



Ruger Chair



Goodra Modular Sofa



Stiel Armchair



Kabira Metal Armchair



Lepal Lounge Chair



Soda 3 Table



Juniper Lounge Chair

Terracotta emerges as a captivating colour trend for commercial interior design in 2024, evoking warmth, earthiness, and timeless elegance. Inspired by the natural hues of sun-baked clay, terracotta.

Earthy Terracotta

Colours



Albio Coffee Table



Philia Armchair



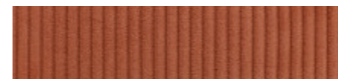
Estrela Soft Chair



Juniper Lounge Chair



Scan to see the Juniper Lounge Chair in AR.



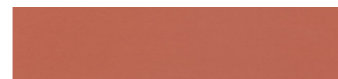
Sculpt Terracotta



Vienna Terracotta



Azuara Terracotta



Valleta Terracotta



Baltazar



Pergola Terracotta



Lamorisse Lounge Chair

COMFORT TESTED

Lisa's comfort-approved choice at Salone del Mobile, the Lamorisse chair, offers more than just style. Crafted from FSC wood, it's a sustainable option, promoting responsible forest management. Plus, its easy dismantling feature ensures efficient recycling or re-purposing, reducing waste and contributing to a circular economy for a greener future.



Scan to see the Lamorisse Lounge Chair in AR.

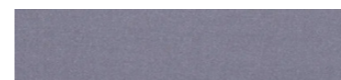
Soft pastel shades, particularly blush pink, peach fuzz, mint green, and light blue, are favoured for creating serene and calming environments, especially in hospitality settings.



Orca Sofa



Kyri Sakura



Tiber Lilac



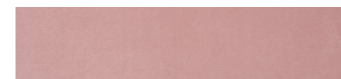
Napa Puf



Mercury Peach Skin



Fontanna Sage



Silky Pink



Azelea Coffee Table



Rossi Armchair



Meander Armchair



Meander Table



Abby Chair



Leila Side Chair

OUR SUSTAINABLE CHOICE

Abby boasts a soft silhouette and eco-friendly design. Crafted from 100% recycled polypropylene, it's both stylish and sustainable. Available in a range of colours, Abby is the versatile choice for eco-conscious seating solutions.



Scan to see the Abby Chair in AR.

Pastel Palette
Colours

02

Materials



Experience a vibrant transformation with the Bold Pattern trend! Hospitality spaces are embracing lively colours and striking designs, from geometric shapes to lively floral prints, creating dynamic and captivating interiors.

Liberty Upholstery

These chairs feature six lively Liberty fabric designs, inspired by historic English patterns. Bursting with vibrant floral prints in five fresh colours, these fabrics bring a touch of tradition with a contemporary edge.



Edra



Malindi Palm



Samora



Splash



Tresco



Fleming Guppy



Bohemia Ragtime



Hermosa Japonica



Bohemia Goji



Eleonora Embroidered Alchemilla Cotton Cushion



Bold Patterns

Materials



Tok Chair & Extendable Table

Consistent with the sustainable design movement, natural materials continues to grow in popularity. From wood and rattan to bamboo and cork, the use of natural materials enhances the connection to the environment and promotes well-being.

From Nature

Materials



Gerria Lounge Chair



Wren Outdoor Armchair



Django Side Chair



Aoife Side Chair



Mikkell Coffee Table



Cork Stool

OUR SUSTAINABLE CHOICE

An excellent sustainable choice due to cork's eco-friendly nature. Being 100% biodegradable, recyclable, and renewable, it's harvested from cork oak trees without harm, allowing for natural regeneration.



Sparta Table

Stone is making an impact in furniture design, with its durable and versatile properties. Statement stone pieces, such as tables and decorative objects, add texture and visual interest to spaces.



Halo Side Table



Sparta Table



Zenon Coffee Table



Mabel Side Table



Meander Dining Table

OUR SUSTAINABLE CHOICE

From an overall sustainability perspective, natural stone has a lower environmental footprint than pre-cast concrete. This is due to the minimal resources used to quarry, fabricate, finish, and transport natural stone.

Statement Stone
Materials

03

Shapes



Azalea Coffee Table



Nelly Lounge Chair



Takumi Armchair



Rossi Lounge Chair



Tuka Mid Side Chair



Azalea Coffee Table



Zero Side Chair

OUR SUSTAINABLE CHOICE

Crafted entirely from recycled polyolefins, this sustainable choice reduces reliance on new fossil resources by re-purposing industrial waste. Promoting circular economy principles, it maintains product quality and functionality.

Soft, curvaceous forms in furniture design offer a departure from traditional angular shapes. Curved silhouettes create a sense of comfort and fluidity, inviting users to relax and unwind.

Curvaceous & Cylindrical
Shape

Canto Modular Seating



Embrace sleek lines and geometric shapes to elevate your space. From minimalist seating to statement tables, angular furniture exudes modern sophistication. Ideal for hotels, restaurants, and bars, this trend adds visual intrigue and contemporary flair to any hospitality setting.



Flip Bar Stool



Kabira Wood Armchair



Motta Armchair



Turrioni Side Chair



Lanya Lounge Chair



Fizz Table

OUR SUSTAINABLE CHOICE

Crafted with FSC-approved wood, the Lanya Lounge Chair ensures a sustainable choice for eco-conscious spaces. By adhering to responsible forestry practices, it promotes environmental conservation while providing high-quality seating for modern hospitality interiors.



Quentin Cage

Furniture with bold and sculptural silhouettes serves as focal points in interior design. Whether it's a unique chair design or an eye-catching lighting fixture, statement pieces add personality and drama to spaces.



Colossus Lounge Chair



Ester Lounge Chair



Espeon Chair



Orbit Lounge Chair



Rublev Chair



Asuka Chair

OUR SUSTAINABLE CHOICE

This striking chair stands out for its sustainability, crafted from galvanized wire and polyester powder coated materials. Durable, weather-resistant, and made from 100% recycled, and recyclable materials.

We hope you enjoyed our Trend Report. Here are a few fun facts as to how we achieved it...



Inside Out Contracts Limited,
Building 16, 42 Creek Road,
London, SE8 3FN

Tel: +44 (0)208 305 3130
Email: mail@insideoutcontracts.com
<https://insideoutcontracts.com/>